

# REPLACEMENT PARTS GUIDE

672G and 672GP Motor Grader (PIN: 1DW672G\_\_F680878—)

672G and 672GP Motor Grader (PIN: 1DW672G\_\_L700954—)



**SECONDARY AIR FILTER ELEMENT, HEAVY-DUTY 14"**  
[AT311067](#)  
 Interval (hrs) - As Required .



**PRIMARY AIR FILTER ELEMENT, HEAVY-DUTY 14"**  
[AT311066](#)  
 Interval (hrs) - As Required



**HYDRAULIC TANK BREATHER**  
[AT101565](#)  
 Interval (hrs) - 2000.



**DIESEL EXHAUST FLUID (DEF) TANK BREATHER**  
[H216169](#)  
 Interval (hrs) - 4000.



**FUEL TANK BREATHER**  
[H216169](#)  
 Interval (hrs) - 1000.



**AXLE OIL FILTER**  
[AT335492](#)  
 Interval (hrs) - 2000.



**HYDRAULIC OIL FILTER**  
[AT367840](#)  
 Interval (hrs) - 2000.



**6WD HYDRAULIC OIL FILTER (IF EQUIPPED)**  
[AT367840](#)  
 Interval (hrs) - 2000.



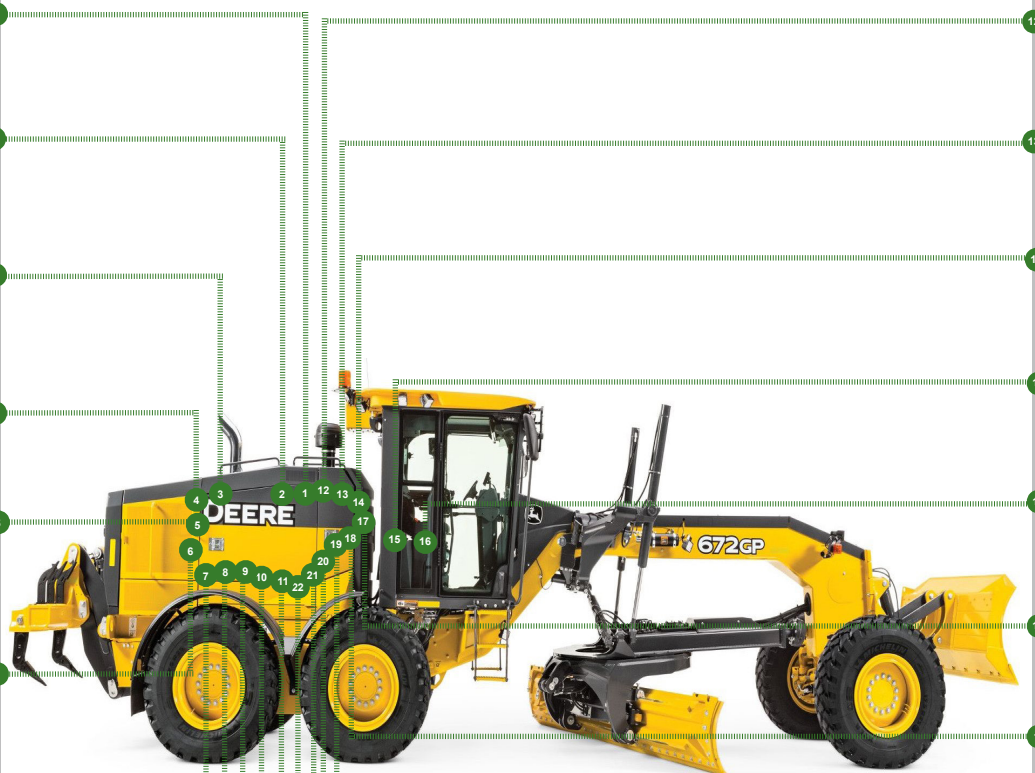
**TRANSMISSION OIL FILTER**  
[AT335492](#)  
 Interval (hrs) - 2000.



**AUXILIARY FUEL FILTER ELEMENT—IF EQUIPPED**  
[AT365869](#)  
 Interval (hrs) - 500.



**REAR AXLE BREATHER**  
[AT101565](#)  
 Interval (hrs) - 2000.



**ENGINE OIL FILTER**  
[DZ118283](#)  
 Interval (hrs) - 500 .



**PRIMARY FUEL FILTER ELEMENT**  
[RE539465](#)  
 Interval (hrs) - 500 .



**FINAL FUEL FILTER ELEMENT**  
[DZ112918](#)  
 Interval (hrs) - 500 .



**CAB FRESH AIR FILTER**  
[AT191102](#)  
 Interval (hrs) - As Required .



**CAB RECIRCULATION AIR FILTER**  
[AT307501](#)  
 Interval (hrs) - As Required .



**PRIMARY AIR FILTER ELEMENT, STANDARD 13"**  
[AT175223](#)  
 Interval (hrs) - As Required .



**SECONDARY AIR FILTER ELEMENT, STANDARD 13"**  
[AT175224](#)  
 Interval (hrs) - As Required .



**DIESEL EXHAUST FLUID (DEF) DOSING UNIT FILTER**  
[DZ114640](#)  
 Interval (hrs) - 200



**DIESEL EXHAUST FLUID (DEF) HEADER SUCTION FILTER AND BAFFLE**  
[AT502964](#)  
 Interval (hrs) - 4000.



**ENGINE ROCKER ARM COVER GASKET**  
[R526607](#)  
 Interval (hrs) - 2000 .



**DIESEL PARTICULATE FILTER (COMPONENT OF EXHAUST FILTER)**  
[DZ100484](#)  
 Interval (hrs) - As Required



# PARTS AND CAPACITIES INFORMATION

**672G and 672GP Motor Grader (PIN: 1DW672G\_\_\_F680878— )**  
**672G and 672GP Motor Grader (PIN: 1DW672G\_\_\_L700954— )**

| Part Description  | Qty or capacity   | Change Interval In Hours |
|---|-------------------|--------------------------|
| John Deere Plus-50™ II Engine Oil <sup>2</sup>                          | 28.4 L (7.5 gal)  | 500                      |
| John Deere Hydrau™ Hydraulic Oil <sup>2</sup>                           | 60.5 L (16.0 gal) | 4000                     |
| John Deere Hy-Gard™ 6WD Hub Oil <sup>2</sup> (if equipped) (each)       | 7.2 L (1.9 gal)   | 1000                     |
| John Deere Hy-Gard™ Transmission, Axle, and Tandem Oil <sup>2</sup>     | 66.4 L (17.5 gal) | 2000                     |
| John Deere Hy-Gard™ Circle Gear Case Oil <sup>2</sup> (standard circle) | 5.7 L (1.5 gal)   | 2000                     |
| John Deere Hy-Gard™ Circle Gear Case Oil <sup>2</sup> (premium circle)  | 6.4 L (1.7 gal)   | 4000                     |
| John Deere Cool-Gard™ II Pre-Mix  | 55.0 L (14.5 gal) | 6000                     |
| Fluid Analysis Test Kits <sup>3</sup>                                   |                   |                          |
| Diesel Engine Oil   | 1                 | 250                      |
| Transmission Oil  | 1                 | 500                      |
| Axle Oil  | 1                 | 500                      |
| Tandem Oil  | 2                 | 500                      |
| Hydraulic Oil   | 1                 | 500                      |
| 6WD Hub Oil (if equipped)   | 2                 | 500                      |
| Diesel Fuel   | 1                 | 500                      |
| Engine Coolant  | 1                 | 500                      |

<sup>2</sup>See operator's manual for recommended oil type and oil viscosities based on operating temperatures.

<sup>3</sup>Based on fluid analysis results, intervals may need to be adjusted for operating conditions. Consult and authorized John Deere dealer.

Plus-50 is a trademark of Deere & Company  
Hydrau is a trademark of Deere & Company  
Hy-Gard is a trademark of Deere & Company  
Cool-Gard is a trademark of Deere & Company



## Service Intervals

| As Required  |  |
|--|--|
| <input type="checkbox"/> Service exhaust filter  | <input type="checkbox"/> Inspect accessory belt and belt tensioner spring                |
| <input type="checkbox"/> Clean cooler cores  | <input type="checkbox"/> Replace engine air intake filter elements                       |
| <input type="checkbox"/> Clean and tighten battery terminals                               | <input type="checkbox"/> Drain fuel tank sump  |
| <input type="checkbox"/> Clean battery compartment   | <input type="checkbox"/> Drain primary fuel filter and water separator                   |
| <input type="checkbox"/> Replace cab fresh air and cab recirculation filters               | <input type="checkbox"/> Drain auxiliary fuel filter and water separator (if equipped)   |
| <input type="checkbox"/> Lubricate circle pinion (standard circle)                         | <input type="checkbox"/> Clean camera lens (if equipped)                                 |
| <input type="checkbox"/> Check tire pressure   | <input type="checkbox"/> Transmission control unit (TCU) calibration                     |
| <input type="checkbox"/> Check blade circle and draft frame wear inserts (standard circle) | <input type="checkbox"/> 6WD controller calibration (if equipped)                        |
| <input type="checkbox"/> Check blade lift cylinder sockets                                 | <input type="checkbox"/> Cross slope sensors calibration (if equipped)                   |
| <input type="checkbox"/> Lubricate saddle locking pin holes                                | <input type="checkbox"/> Hydraulic valves calibration (if equipped)                      |
| <input type="checkbox"/> Blade side shift wear insert adjustment                           | <input type="checkbox"/> Replace starting fluid cylinder (if equipped)                   |
| Every 10 Hours or Daily  |  |
| <input type="checkbox"/> Check hydraulic tank oil level                                    | <input type="checkbox"/> Check engine oil level  |
| <input type="checkbox"/> Check transmission oil level                                      | <input type="checkbox"/> Check engine coolant surge tank level                           |
| Every 50 Hours   |  |
| <input type="checkbox"/> Lubricate frame hinge pivots                                      | <input type="checkbox"/> Lubricate front axle lean bar pivot                             |
| <input type="checkbox"/> Lubricate lift cylinders  | <input type="checkbox"/> Lubricate front axle steering pin                               |
| <input type="checkbox"/> Lubricate draft frame ball  | <input type="checkbox"/> Lubricate tie rod ends  |
| <input type="checkbox"/> Lubricate front mounted scarifier or dozer blade (if equipped)    | <input type="checkbox"/> Lubricate steering cylinders                                    |
| <input type="checkbox"/> Lubricate Balderson™ style front lift group (if equipped)         | <input type="checkbox"/> Lubricate midmount scarifier (if equipped)                      |
| <input type="checkbox"/> Lubricate front axle oscillation pin                              | <input type="checkbox"/> Lubricate circle side shift cylinder                            |
| <input type="checkbox"/> Lubricate front axle lean pivot casting pins                      | <input type="checkbox"/> Lubricate saddle locking pin                                    |
| Every 250 Hours  |  |
| <input type="checkbox"/> Check hybrid battery electrolyte level (if equipped)              | <input type="checkbox"/> Take engine oil sample  |
| Initial Service—500 Hours <sup>1</sup>   |  |
| <input type="checkbox"/> Replace axle oil filter   | <input type="checkbox"/> Replace transmission oil filter                                 |
| Every 500 Hours  |  |
| <input type="checkbox"/> Check axle oil level  | <input type="checkbox"/> Replace primary fuel filter and water separator                 |
| <input type="checkbox"/> Check tandem oil level  | <input type="checkbox"/> Replace auxiliary fuel filter and water separator (if equipped) |
| <input type="checkbox"/> Drain and refill engine oil and replace filter                    | <input type="checkbox"/> Take hydraulic oil sample                                       |
| <input type="checkbox"/> Drain and refill engine oil (quick service) (if equipped)         | <input type="checkbox"/> Take transmission oil sample                                    |
| <input type="checkbox"/> Check circle gear case oil level (standard circle)                | <input type="checkbox"/> Take axle oil sample  |
| <input type="checkbox"/> Check 6WD hub oil level (if equipped)                             | <input type="checkbox"/> Take tandem oil sample  |
| <input type="checkbox"/> Lubricate tandem pivots   | <input type="checkbox"/> Take 6WD hub oil sample (if equipped)                           |
| <input type="checkbox"/> Check brake accumulator   | <input type="checkbox"/> Take engine coolant sample                                      |
| <input type="checkbox"/> Replace final fuel filter   | <input type="checkbox"/> Take diesel fuel sample   |
| <input type="checkbox"/> Lubricate circle ring gear (premium circle)                       |  |

## Service Intervals

| Every 1000 Hours  |  |
|---|--|
| <input type="checkbox"/> Drain and refill 6WD hub oil (if equipped)                           | <input type="checkbox"/> Check coolant condition                                       |
| <input type="checkbox"/> Adjust front wheel bearings (standard axle only)                     | <input type="checkbox"/> Replace fuel tank breather                                    |
| <input type="checkbox"/> Check engine air intake hoses  |  |
| Every 2000 Hours  |  |
| <input type="checkbox"/> Drain and refill axle oil  | <input type="checkbox"/> Replace axle oil filter                                       |
| <input type="checkbox"/> Drain and refill transmission oil                                    | <input type="checkbox"/> Replace hydraulic oil filter                                  |
| <input type="checkbox"/> Drain and refill transmission oil (quick service) (if equipped)      | <input type="checkbox"/> Replace transmission oil filter                               |
| <input type="checkbox"/> Replace rear axle breather filter and hydraulic tank breather filter | <input type="checkbox"/> Replace 6WD hydraulic oil filter (if equipped)                |
| <input type="checkbox"/> Drain and refill circle gear case oil (standard circle)              | <input type="checkbox"/> Replace diesel exhaust fluid (DEF) dosing unit filter         |
| <input type="checkbox"/> Check and adjust engine valve lash                                   | <input type="checkbox"/> Remove and clean open crankcase ventilation (OCV) tube        |
| Every 4000 Hours  |  |
| <input type="checkbox"/> Drain and refill hydraulic tank oil                                  | <input type="checkbox"/> Replace diesel exhaust fluid (DEF) tank breather              |
| <input type="checkbox"/> Drain and refill hydraulic tank oil (quick service) (if equipped)    | <input type="checkbox"/> Clean diesel exhaust fluid (DEF) tank                         |
| <input type="checkbox"/> Drain and refill tandem oil  | <input type="checkbox"/> Replace diesel exhaust fluid (DEF) header suction filter      |
| <input type="checkbox"/> Clean transmission pump inlet screen                                 | <input type="checkbox"/> Replace diesel exhaust fluid (DEF) baffle                     |
| <input type="checkbox"/> Drain and refill circle gear case oil (premium circle)               |  |
| Every 6000 Hours  |  |
| <input type="checkbox"/> Drain and refill cooling system                                      | <input type="checkbox"/> Drain and refill cooling system (quick service) (if equipped) |
| <sup>1</sup> Perform initial service once after the first 500 hours of operation.             |  |