

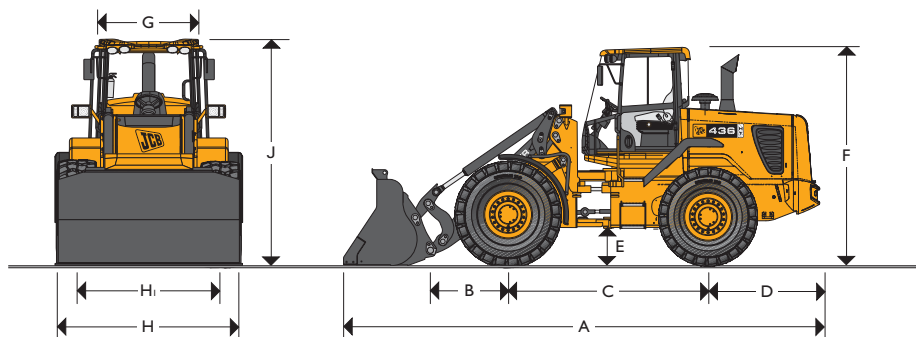


JCB WHEEL LOADER | 436 HT

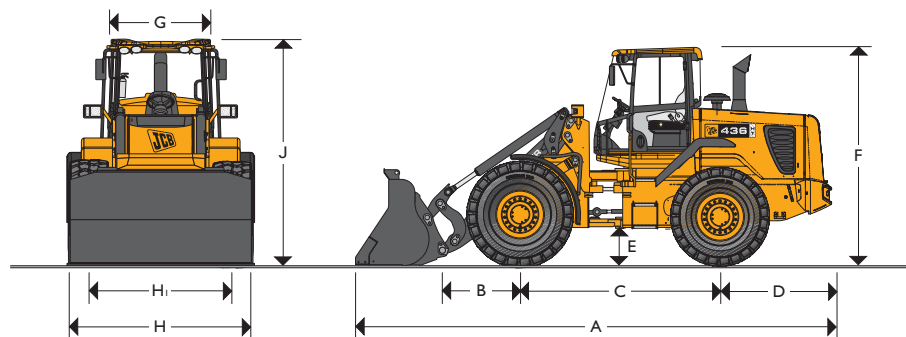


MAX. ENGINE POWER: 177hp (132kW)
 MAX. OPERATING WEIGHT: 37251lb (16897kg)
 MAX. LOADER CAPACITY: 3.5yd³ (2.7m³)

STATIC DIMENSIONS – Standard height arm



STATIC DIMENSIONS – Super high lift arm (SHL) & High lift arm (HL)



STATIC DIMENSIONS – Standard height arm

		HT
A	Overall length	ft-in (mm) 22-9 (6926)
B	Axle to pivot pin	ft-in (mm) 3-9 (1143)
C	Wheel base	ft-in (mm) 9-10 (3000)
D	Axle to counterweight face	ft-in (mm) 5-11 (1810)
E	Minimum ground clearance	ft-in (mm) 1-6 (459)
F	Height over exhaust	ft-in (mm) 10-6 (3192)
G	Width over cab	ft-in (mm) 4-7 (1400)
H	Width over tires	ft-in (mm) 8-6 (2597)
H _i	Wheel track	ft-in (mm) 6-9 (2070)
J	Height over cab	ft-in (mm) 10-11 (3335)
	Hinge Pin height (maximum)	ft-in (mm) 13-1 (3996)
	Overall operating height	ft-in (mm) 17-4 (5305)
	Front axle weight	lb (kg) 13256 (6013)
	Rear axle weight	lb (kg) 18717 (8490)
	Total weight	lb (kg) 31974 (14503)
	Inside radius	ft-in (mm) 9-3 (2825)
	Maximum radius	ft-in (mm) 19-3 (5860)
	Articulation angle	degrees ± 40°

STATIC DIMENSIONS – Super high lift arm (SHL) & High lift arm (HL)

		SHL	HL
A	Overall length	ft-in (mm) 25-4 (7726)	23-11 (7282)
B	Axle to pivot pin	ft-in (mm) 7-9 (2366)	4-11 (1499)
C	Wheel base	ft-in (mm) 9-10 (3000)	9-10 (3000)
D	Axle to counterweight face	ft-in (mm) 5-11 (1816)	5-11 (1816)
E	Minimum ground clearance	ft-in (mm) 1-6 (459)	1-6 (459)
F	Height over exhaust	ft-in (mm) 10-10 (3192)	10-10 (3192)
G	Width over cab	ft-in (mm) 4-7 (1400)	4-7 (1400)
H	Width over tires	ft-in (mm) 8-6 (2597)	8-6 (2597)
H _i	Wheel track	ft-in (mm) 6-9 (2070)	6-9 (2070)
J	Height over cab	ft-in (mm) 10-11 (3335)	10-11 (3335)
	Hinge -Pin height (maximum)	ft-in (mm) 17-1 (5213)	15-3 (4650)
	Overall operating height	ft-in (mm) 21-5 (6522)	13173 (5959)
	Front axle weight	lb (kg) 17556 (7968)	15726 (7133)
	Rear axle weight	lb (kg) 16704 (7577)	17328 (7860)
	Total weight	lb (kg) 34271 (15545)	33054 (14993)
	Inside radius	ft-in (mm) 9-3 (2825)	9-3 (2825)
	Maximum radius	ft-in (mm) 20-4 (6196)	21-9 (6620)
	Articulation angle	degrees ± 40°	± 40°

*Data based on machine equipped with 3.1y³ (2.4m³) bucket with toe plates and Michelin 20.5R25 XHA (L3) radial tires.

*Data based on machine equipped with 3.1y³ (2.4m³) bucket with toe plates and Michelin 20.5R25 XHA (L3) radial tires.

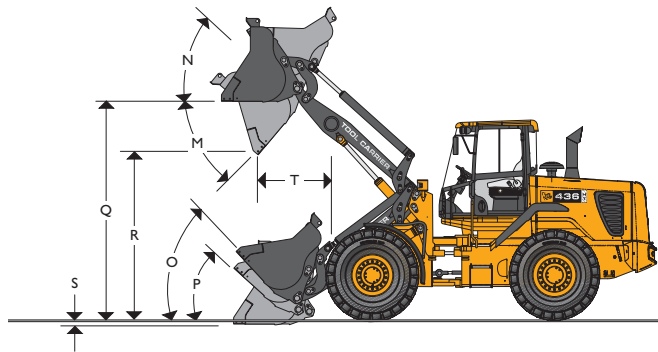
JCB WHEEL LOADER | 436 HT



JCB WHEEL LOADER | 436 HT



LOADER DIMENSIONS – Standard height arm



CHANGES TO OPERATING PERFORMANCE AND DIMENSIONS

Tire size	Manufacturer	Type	Rating	Op. weight lb (kg)	Tipping loads		Dimensions	
					Straight lb (kg)	Full turn lb (kg)	Vertical in (mm)	Width in (mm)
20.5 - 25 (crossply)	Firestone		L2	-767 (-348)	-459 (-208)	-443 (-201)	-0.354 (-9)	+0.197 (+5)
20.5 - 25 (crossply)	Goodyear	SGL	L2	-119 (-54)	-71 (-32)	-68 (-31)	-0.354 (-9)	+0.197 (+5)
20.5 R25 (radial)	Goodyear	RL - 2 +	L2	+168 (+76)	+99 (+45)	+97 (+44)	-0.354 (-9)	+0.197 (+5)
20.5 R25 (radial)	Michelin	XTLA	L2	-353 (-160)	-212 (-96)	-205 (-93)	-0.354 (-9)	+0.197 (+5)
550/65 R25 (radial)	Michelin	XLD	L3	-265 (-120)	-157 (-71)	-157 (-69)	0	0
20.5 R25 (radial)	Michelin	XRD1A	L4	+1006 (+456)	+600 (+272)	+582 (+264)	+1.142 (+29)	+0.315 (+8)
20.5 R25 (radial)	Michelin	XMINED2	L5	+1500 (+680)	+897 (+407)	+867 (+393)	+1.142 (+29)	-0.118 (-3)
20.5 R25 (radial)	Goodyear	RL-5K	L5	+1323 (+600)	+789 (+358)	+765 (+347)	+1.142 (+29)	-0.118 (-3)
XD counterweight		-	-	+839 (+380)	+1499 (+680)	+1257 (+570)	0	0

JCB WHEEL LOADER | 436 HT

Assumes the machine is fitted with Michelin 20.5R25 XHA (L3) tires and XD counterweight



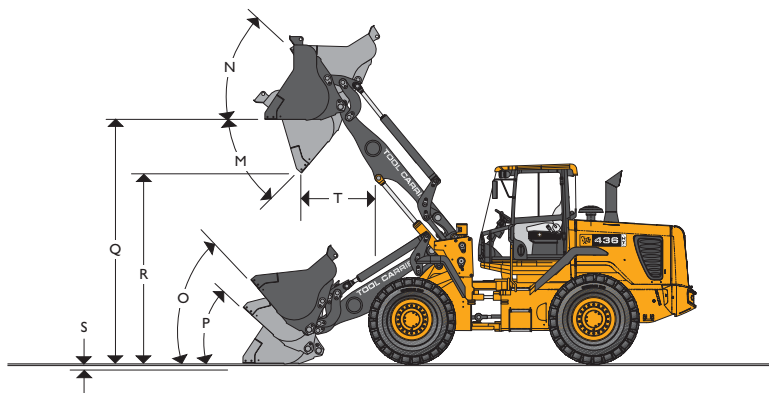
Bucket mounting		Direct	Direct	Direct	Direct	Quickhitch	Quickhitch	Quickhitch	Quickhitch
Bucket type		General purpose	General purpose	General purpose	General purpose	General purpose	General purpose	General purpose	General purpose
Bucket equipment		Tipped teeth	Tipped teeth	Reversible toeplate	Reversible toeplate	Tipped teeth	Tipped teeth	Reversible toeplate	Reversible toeplate
Bucket capacity (SAE heaped)	yd ³ (m ³)	3.0 (2.3)	3.4 (2.6)	3.1 (2.4)	3.5 (2.7)	3.0 (2.3)	3.4 (2.6)	3.1 (2.4)	3.5 (2.7)
Bucket capacity (struck)	yd ³ (m ³)	2.593 (1.984)	2.967 (2.270)	2.691 (2.057)	3.068 (2.346)	2.593 (1.984)	2.967 (2.270)	2.691 (2.057)	3.068 (2.346)
Bucket width	ft-in (mm)	9-0 (2740)	9-0 (2740)	8-10 (2700)	8-10 (2700)	9-0 (2740)	9-0 (2740)	8-10 (2700)	8-10 (2700)
Bucket weight	kg (lb)	2532 (1151)	2693 (1224)	2559 (1163)	2719 (1236)	2473 (1124)	2638 (1199)	2499 (1136)	2664 (1211)
Maximum material density	lb/yd ³ (kg/m ³)	3729 (2206)	3244 (1924)	3608 (2114)	3151 (1853)	3519 (2082)	3061 (1815)	3406 (1995)	2973 (1748)
Tipping load straight	lb (kg)	26780 (12147)	26433 (11990)	26780 (12147)	26433 (11990)	25371 (11508)	25036 (11356)	25371 (11508)	25036 (11356)
Tipping load full turn	lb (kg)	22372 (10148)	22059 (10006)	22372 (10148)	22059 (10006)	21118 (9579)	20812 (9440)	21118 (9579)	20812 (9440)
Payload	lb (kg)	11186 (5074)	11030 (5003)	11186 (5074)	11030 (5003)	10558 (4789)	10406 (4720)	10558 (4789)	10406 (4720)
Maximum break out force	lbf (kN)	33048 (147)	30240 (134)	33048 (147)	30240 (134)	29592 (131)	27432 (122)	29592 (131)	27432 (122)
M Dump angle maximum	degrees	50°	50°	50°	50°	50°	50°	50°	50°
N Roll back angle full height	degrees	58°	58°	58°	58°	58°	58°	58°	58°
O Roll back at carry	degrees	48°	48°	48°	48°	48°	48°	48°	48°
P Roll back at ground level	degrees	43°	43°	43°	43°	43°	43°	43°	43°
Q Load over height	ft-in (mm)	12-3 (3755)	12-3 (3755)	12-3 (3755)	12-3 (3755)	12-3 (3755)	12-3 (3755)	12-3 (3755)	12-3 (3755)
R Dump height (45° dump)	ft-in (mm)	9-3 (2825)	9-0 (2761)	9-8 (2974)	9-6 (2883)	9-0 (2740)	8-9 (2676)	9-5 (2862)	9-2 (2798)
S Dig depth	ft-in (mm)	0-4 (114)	0-4 (114)	0-4 (106)	0-4 (106)	0-4 (114)	0-4 (114)	0-4 (106)	0-4 (106)
T Reach at dump height	ft-in (mm)	3-9 (1154)	4-0 (1213)	3-5 (1044)	3-7 (1103)	4-0 (1231)	4-3 (1289)	3-8 (1121)	3-10 (1179)
Reach maximum (45° dump) – horizontal arm	ft-in (mm)	6-6 (1993)	6-9 (2057)	6-2 (1883)	6-5 (1947)	5-10 (1778)	7-0 (2142)	6-5 (1968)	6-8 (2032)
Operating weight (includes 176lb (80kg) operator and full fuel tank)	lb (kg)	32785 (14871)	32946 (14944)	32811 (14883)	32972 (14956)	33440 (15168)	33605 (15243)	33466 (15180)	33631 (15255)



JCB WHEEL LOADER | 436 HT



LOADER DIMENSIONS – Hi lift arm (HL)



CHANGES TO OPERATING PERFORMANCE AND DIMENSIONS

Tire size	Manufacturer	Type	Rating	Op. weight lb (kg)	Tipping loads		Dimensions	
					Straight lb (kg)	Full turn lb (kg)	Vertical in (mm)	Width in (mm)
20.5 - 25 (crossply)	Firestone		L2	-767 (-348)	-459 (-208)	-443 (-201)	-0.354 (-9)	+0.197 (+5)
20.5 - 25 (crossply)	Goodyear	SGL	L2	-119 (-54)	-71 (-32)	-68 (-31)	-0.354 (-9)	+0.197 (+5)
20.5 R25 (radial)	Goodyear	RL - 2 +	L2	+168 (+76)	+99 (+45)	+97 (+44)	-0.354 (-9)	+0.197 (+5)
20.5 R25 (radial)	Michelin	XTLA	L2	-353 (-160)	-212 (-96)	-205 (-93)	-0.354 (-9)	+0.197 (+5)
550/65 R25 (radial)	Michelin	XLD	L3	-265 (-120)	-157 (-71)	-157 (-69)	0	0
20.5 R25 (radial)	Michelin	XRD1A	L4	+1006 (+456)	+600 (+2727)	+582 (+264)	+1.142 (+29)	+0.315 (+8)
20.5 R25 (radial)	Michelin	XMINED2	L5	+1500 (+680)	+897 (+407)	+867 (+393)	+1.142 (+29)	-0.118 (-3)
20.5 R25 (radial)	Goodyear	RL-5K	L5	+1323 (+600)	+789 (+358)	+765 (+347)	+1.142 (+29)	-0.118 (-3)
XD counterweight		-	-	+839 (+380)	+1499 (+550)	+1257 (+466)	0	0

JCB WHEEL LOADER | 436 HT

Assumes the machine is fitted with Michelin 20.5R25 XHA (L3) tires and XD counterweight



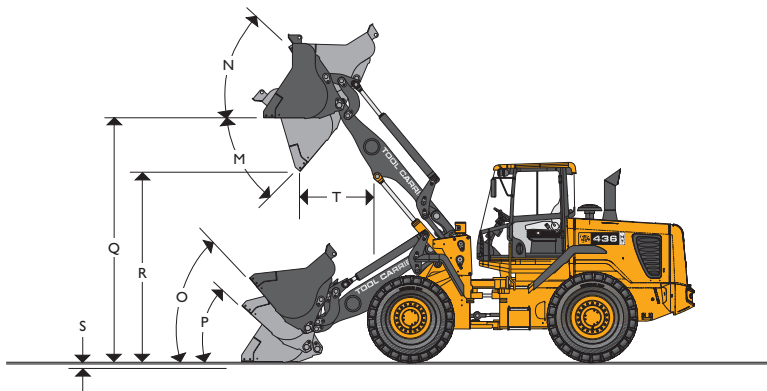
		Direct	Direct	Direct	Direct	Quickhitch	Quickhitch	Quickhitch	Quickhitch
Bucket mounting		Direct	Direct	Direct	Direct	Quickhitch	Quickhitch	Quickhitch	Quickhitch
Bucket type		General purpose	General purpose	General purpose	General purpose	General purpose	General purpose	General purpose	General purpose
Bucket equipment		Tipped teeth	Tipped teeth	Reversible toeplate	Reversible toeplate	Tipped teeth	Tipped teeth	Reversible toeplate	Reversible toeplate
Bucket capacity (SAE heaped)	yd ³ (m ³)	3.0 (2.3)	3.4 (2.6)	3.1 (2.4)	3.5 (2.7)	3.0 (2.3)	3.4 (2.6)	3.1 (2.4)	3.5 (2.7)
Bucket capacity (struck)	yd ³ (m ³)	2.593 (1.984)	2.967 (2.270)	2.691 (2.057)	3.068 (2.346)	2.593 (1.984)	2.967 (2.270)	2.691 (2.057)	3.068 (2.346)
Bucket width	ft-in (mm)	9-0 (2740)	9-0 (2740)	8-10 (2700)	8-10 (2700)	9-0 (2740)	9-0 (2740)	8-10 (2700)	8-10 (2700)
Bucket weight	kg (lb)	2532 (1151)	2693 (1224)	2559 (1163)	2719 (1236)	2473 (1124)	2638 (1199)	2499 (1136)	2664 (1211)
Maximum material density	lb/yd ³ (kg/m ³)	2845 (1683)	2476 (1468)	2754 (1613)	2405 (1414)	2687 (1590)	2357 (1071)	2600 (1523)	2269 (1334)
Tipping load straight	lb (kg)	20426 (9265)	20161 (9145)	20426 (9265)	20161 (9145)	19354 (8779)	19278 (8763)	19354 (8779)	19101 (8664)
Tipping load full turn	lb (kg)	17075 (7745)	16837 (7637)	17075 (7745)	16837 (7637)	16122 (7313)	16026 (7285)	16122 (7313)	15889 (7207)
Payload	lb (kg)	8536 (3872)	8417 (3818)	8536 (3872)	8417 (3818)	8060 (3656)	8013 (3642)	8060 (3656)	7943 (3603)
Maximum break out force	lbf (kN)	33048 (147)	30240 (134)	33048 (147)	30240 (134)	29592 (131)	27432 (122)	29592 (131)	27432 (122)
M Dump angle maximum	degrees	45°	45°	45°	45°	45°	45°	45°	45°
N Roll back angle full height	degrees	60°	60°	60°	60°	60°	60°	60°	60°
O Roll back at carry	degrees	54°	54°	54°	54°	54°	54°	54°	54°
P Roll back at ground level	degrees	45°	45°	45°	45°	45°	45°	45°	45°
Q Load over height	ft-in (mm)	14-6 (4409)	14-6 (4409)	14-6 (4409)	14-6 (4409)	14-6 (4409)	14-6 (4409)	14-6 (4409)	14-6 (4409)
R Dump height (45° dump)	ft-in (mm)	11-5 (3479)	11-2 (3415)	11-11 (3628)	11-7 (3537)	11-2 (3394)	10-11 (3330)	11-6 (3516)	11-4 (3452)
S Dig depth	ft-in (mm)	0-4 (109)	0-4 (109)	0-4 (101)	0-4 (101)	0-4 (109)	0-4 (109)	0-4 (101)	0-4 (101)
T Reach at dump height	ft-in (mm)	3-9 (1154)	4-0 (1213)	3-5 (1044)	3-7 (1103)	4-0 (1231)	4-3 (1289)	3-8 (1121)	3-10 (1179)
Reach maximum (45° dump) – horizontal arm	ft-in (mm)	8-2 (2483)	8-4 (2547)	7-9 (2373)	8-0 (2437)	7-5 (2268)	8-8 (2632)	8-11 (2458)	8-3 (2522)
Operating weight (includes 176lb (80kg) operator and full fuel tank)	lb (kg)	33865 (15361)	34026 (15434)	33892 (15373)	34053 (15446)	34520 (15658)	34686 (15733)	34546 (15670)	34712 (15745)



JCB WHEEL LOADER | 436 HT



LOADER DIMENSIONS – Super high lift arm (SHL)



CHANGES TO OPERATING PERFORMANCE AND DIMENSIONS

Tire size	Manufacturer	Type	Rating	Op. weight lb (kg)	Tipping loads		Dimensions	
					Straight lb (kg)	Full turn lb (kg)	Vertical in (mm)	Width in (mm)
20.5 - 25 (crossply)	Firestone		L2	-767 (-348)	-298 (-135)	-287 (-130)	-0.354 (-9)	+0.197 (+5)
20.5 - 25 (crossply)	Goodyear	SGL	L2	-119 (-54)	-46 (-21)	-44 (-20)	-0.354 (-9)	+0.197 (+5)
20.5 R25 (radial)	Goodyear	RL - 2 +	L2	+168 (+76)	+64 (+29)	+62 (+28)	-0.354 (-9)	+0.197 (+5)
20.5 R25 (radial)	Michelin	XTLA	L2	-353 (-160)	-161 (-73)	-141 (-64)	-0.354 (-9)	+0.197 (+5)
550/65 R25 (radial)	Michelin	XLD	L3	-265 (-120)	-101 (-46)	-99 (-45)	0	0
20.5 R25 (radial)	Michelin	XRD1A	L4	+1006 (+456)	-390 (-177)	-377 (-171)	+1.142 (+29)	+0.315 (+8)
20.5 R25 (radial)	Michelin	XMINED2	L5	+1500 (+680)	+582 (+264)	+562 (+255)	+1.142 (+29)	-0.118 (-3)
20.5 R25 (radial)	Goodyear	RL-5K	L5	+1323 (+600)	+512 (+232)	496 (-225)	+1.142 (+29)	-0.118 (-3)
XD counterweight		-	-	+839 (+380)	+928 (+421)	+778 (+353)	0	0

JCB WHEEL LOADER | 436 HT

Assumes the machine is fitted with Michelin 20.5R25 XHA (L3) tires and XD counterweight



Bucket mounting		Direct	Direct	Direct	Direct	Quickhitch	Quickhitch	Quickhitch	Quickhitch
Bucket type		General purpose	General purpose	General purpose	General purpose	General purpose	General purpose	General purpose	General purpose
Bucket equipment		Tipped teeth	Tipped teeth	Reversible toeplate	Reversible toeplate	Tipped teeth	Tipped teeth	Reversible toeplate	Reversible toeplate
Bucket capacity (SAE heaped)	yd ³ (m ³)	3.0 (2.3)	3.4 (2.6)	3.1 (2.4)	3.5 (2.7)	3.0 (2.3)	3.4 (2.6)	3.1 (2.4)	3.5 (2.7)
Bucket capacity (struck)	yd ³ (m ³)	2.593 (1.984)	2.967 (2.270)	2.691 (2.057)	3.068 (2.346)	2.593 (1.984)	2.967 (2.270)	2.691 (2.057)	3.068 (2.346)
Bucket width	ft-in (mm)	9-0 (2740)	9-0 (2740)	8-10 (2700)	8-10 (2700)	9-0 (2740)	9-0 (2740)	8-10 (2700)	8-10 (2700)
Bucket weight	kg (lb)	2532 (1151)	2693 (1224)	2559 (1163)	2719 (1236)	2473 (1124)	2638 (1199)	2499 (1136)	2664 (1211)
Maximum material density	lb/yd ³ (kg/m ³)	2308 (1365)	2008 (1191)	2233 (1308)	1950 (1147)	2178 (1289)	1894 (1123)	2108 (1235)	1840 (1082)
Tipping load straight	lb (kg)	16905 (7668)	16687 (7569)	16905 (7668)	16687 (7569)	16014 (7264)	15803 (7168)	16014 (7264)	15803 (7168)
Tipping load full turn	lb (kg)	13849 (6282)	13655 (6194)	13849 (6282)	13655 (6194)	13071 (5929)	12882 (5843)	13071 (5929)	12882 (5843)
Payload	lb (kg)	6923 (3140)	6826 (3096)	6923 (3140)	6826 (3096)	6534 (2964)	6440 (2921)	6534 (2964)	6440 (2921)
Maximum break out force	lbf (kN)	34425 (153)	31247 (139)	34425 (153)	31247 (139)	30573 (136)	28550 (124)	30573 (136)	28550 (127)
M Dump angle maximum	degrees	50°	50°	50°	50°	50°	50°	50°	50°
N Roll back angle full height	degrees	58°	58°	58°	58°	58°	58°	58°	58°
O Roll back at carry	degrees	48°	48°	48°	48°	48°	48°	48°	48°
P Roll back at ground level	degrees	43°	43°	43°	43°	43°	43°	43°	43°
Q Load over height	ft-in (mm)	16-4 (4976)	4976 (16-4)	4976 (16-4)	4976 (16-4)	4976 (16-4)	4976 (16-4)	4976 (16-4)	4976 (16-4)
R Dump height (45° dump)	ft-in (mm)	13-3 (4042)	3978 (13-0)	4191 (13-9)	4100 (13-5)	3957 (13-0)	3893 (12-9)	4079 (13-5)	4015 (13-2)
S Dig depth	ft-in (mm)	0-3 (87)	87 (0-3)	79 (0-3)	79 (0-3)	87 (0-3)	87 (0-3)	79 (0-3)	79 (0-3)
T Reach at dump height	ft-in (mm)	3-10 (1178)	1237 (4-1)	1068 (3-6)	1127 (3-8)	1255 (4-1)	1313 (4-4)	1145 (3-9)	1230 (3-11)
Reach maximum (45° dump) – horizontal arm	ft-in (mm)	9-9 (2958)	3022 (9-11)	2848 (9-4)	2912 (9-7)	2743 (9-0)	3107 (10-2)	2933 (9-7)	2997 (9-10)
Operating weight (includes 176lb (80kg) operator and full fuel tank)	lb (kg)	35082 (15913)	35243 (15986)	35109 (15925)	35270 (15998)	35737 (16210)	35902 (16285)	35543 (16122)	35929 (16297)



JCB WHEEL LOADER | 436 HT



JCB WHEEL LOADER | 436 HT

LOADER

Widely spaced four ram geometry provides the combination of excellent visibility with high bucket torque characteristics throughout the working arc. The pin, bushing and seal design on all pivot points provide extended maintenance intervals.

ENGINE

6-cylinder wastegated turbo-charged, liquid cooled, direct injection diesel. Air-to-air charge-air cooling ensures low emissions and provides minimum fuel consumption. A remote sump oil drain facility simplifies servicing.

Type		4 stroke direct injection
Model		Cummins BTAA 5.9C
Capacity	in ³ (liters)	360 (5.9)
Bore	in (mm)	4.0 (102)
Stroke	in (mm)	4.75 (120)
Aspiration		Turbo charged
Cylinders		6
Max gross power to SAE J1995/ISO 14396	hp (kW) @ 2000rpm	177 (132)
Rated gross power to SAE J1995/ISO 14396	hp (kW) @ 2200rpm	173 (129)
Net power to SAE J1349/EEC 80/1269	hp (kW) @ 2200rpm	165 (123)
Max torque	lbf.ft (Nm) @ 1300rpm	580 (786)

Emissions:-

Relevant standards EUNR MM Stage 2 USA CFR Part 89
(Complies with EU/EPA "Off Highway" Construction Equipment Regulation Stage 2).

TRANSMISSION

4 wheel drive, automatic smooth shift transmission electrically operated selector and gear change incorporating a speed inhibitor and modulation for smooth, responsive on-the-move direction and ratio changes. Single stage integral torque converter 4 forward and 3 reverse gears.

Type		Smooth shift powershift
Make & model		ZF 4WG 190
Torque converter stall ratio		2.873 : 1
1st gear	mph (kph)	5.1 (8.2)
2nd gear	mph (kph)	9.0 (14.5)
3rd gear	mph (kph)	16.8 (27)
4th gear (forward only)	mph (kph)	23.5 (37.9)

AXLES

Type		Epicyclic hub reduction
Make & model		JCB PR12 front & rear
Overall axle ratio		21.098 : 1
Rear axle oscillation		21°
Front and rear torque proportional differential		

STEERING

Priority steering hydraulic system with emergency steering. Piston pump meters flow through steer valve @ 2755 lb/in² (190 bar) to provide smooth, low-effort response. Steering angle ± 40°. Steering cylinders located high in the chassis fabrication to provide protection from damage. Adjustable tilt and slide steering column.

BRAKES

Hydraulic power braking on all wheels, operating pressure 1160psi (80 bar). Dual circuit with accumulator back-up provide maximum safety under all conditions. Outboard mounted, oil immersed, multi-plate disc brakes with organic brake linings. Parking brake, mechanical disc-type operating on transmission output shaft.

TIRES

A variety of tire options are available including:
20.5 x 25 x 12 ply (L2). 20.5 x 25 SGL (L2). 20.5R25 XTLA (L2). 550/65R25 XLD (L3). 20.5R25 XHA (L3). 20.5R25 XRDIA (L4). 20.5R25 XMINED2 (L5). 20.5R25 RL-K (L5)

LOADER HYDRAULICS

Twin variable displacement piston pumps feed a "load sensing" system providing a fuel efficient and responsive distribution of power as required. Main services are servo actuated from a single lever (joystick) loader control. Auxiliary circuits controlled via additional lever or joystick mounted electrical buttons. Accumulator back-up is available to control loader in the event of loss of pump pressure.

Pump type	Twin variable displacement piston pumps			
Pump 1 max. flow	gal/min (l/min)	35 (132)		
Pump 1 max. pressure	lb/in ² (bar)	3625 (250)		
Pump 2 max. flow	gal/min (l/min)	35 (132)		
Pump 2 max. pressure	lb/in ² (bar)	2320 (160)		
Hydraulic cycle times at full engine revs		seconds		
Arms raise (full bucket)		5.9		
Bucket dump (full bucket)		1.0		
Arms lower (empty bucket)		3.4		
Total cycle		10.3		
Cylinder dimensions	Bore	Rod	Closed centres	Stroke
Bucket cylinder x1	in (mm)	4.3 (110)	68.5 (1740)	41.6 (1056)
Lift cylinder x2	in (mm)	5.1 (130)	49.6 (1259)	32.0 (813)
Steer cylinder x2	in (mm)	3.1 (80)	24.4 (621)	12.3 (312)



JCB WHEEL LOADER | 436 HT



JCB WHEEL LOADER | 436 HT

ELECTRICAL SYSTEM

24 volt negative ground system, 70 Amp alternator with 2 x 126 Amp hour low maintenance batteries. Isolator located in rear of machine. Ignition key start/stop and pre-heat cold start. Primary fuse box. Other electrical equipment includes quartz halogen, twin filament working lights, front/rear wash/wipe, heated rear window, full headlights, clock, gauge and warning light monitoring. Connectors to IP67 standard.

System voltage	Volt	24
Alternator output	Amp hour	70
Battery capacity	Amp hour	2 x 145
Cold Cranking Performance	cca	850

CAB

Resiliently mounted ROPS/FOPS structure (tested in accordance with ISO 3471-1 : 1986 / ISO 3449 : 1984). Deluxe operator environment combines ergonomically located controls with a high level of appointment and low internal noise levels. Entry/exit is via large rear hinged door and anti-slip steps. Excellent forward visibility is provided by a 3 section curved, laminated windshield and low waistline. Extensive instrumentation includes electronic monitoring panel and LCD display (EMS). Heating / ventilation provides balanced and filtered air distribution throughout the cab via a powerful 37,567 BTU/HR (11 kW) capacity heater. The unitary construction allows easy sealing and prevents ingress of dust. A transmission lock on the selector prevents inadvertent engagement and the loader controls can be isolated for safe road travel. Noise level measured in accordance with 86/662/EEC, amendment 95/27/EC

Interior pressure level : 74 Lp (A)

ATTACHMENTS

An extensive range of attachments including pallet forks, crane jibs, high dumping buckets and timber grapples are available to fit directly or via the JCB quickhitch mounting.

SERVICE FILL CAPACITIES

	(gal) liters
Hydraulic system	55 (210)
Fuel tank	61 (230)
Engine oil sump	3.7 (14)
Transmission oil system	8.5 (32.5)
Axle oil (front)	10.3 (39)
Axle oil (rear)	10.3 (39)
Engine coolant system	9 (35)

STANDARD EQUIPMENT

Loader: Bucket reset mechanism, loader arm kickout mechanism, loader control isolator, single lever servo control, high torque true parallel lift geometry combines with excellent visibility between the arms.

Engine: Air cleaner – 2 stage dry type – cyclonic with primary and safety elements, stainless steel muffler and chromed exhaust stack, sedimenter, twin bowl fuel filters, fan guards.

Transmission: Single lever shift control, speed inhibitor, neutral start, disconnect on footbrake and loader lever, disconnect isolator switch, direction changes and kickdown on gear selector and loader control lever.

Axles: Epicyclic wheel hub reduction, fixed front, oscillating rear.

Brakes: Multi-plate wet disc brakes, organic linings, dual circuit hydraulic power assisted. Parking brake disc on transmission output shaft.

Hydraulics: Piston pumps with priority steer, emergency steer back-up, 2 spool loader circuit with accumulator support, 3rd spool auxiliary hydraulic circuit as standard. Hydraulic tank located in the rear frame.

Steering: Adjustable steering column, "soft feel" steering wheel, 5 turns lock to lock, resilient stops on max lock.

Cab: ROPS/FOPS safety structure, cigar lighter, ashtray, interior reading light, center mounted master warning light. Electronic monitoring panel with LCD message display. Two speed intermittent front windshield wiper and self park, single speed rear windshield wiper and self park. 3 speed heater/demisting with replaceable air filter, LH and RH opening windows, sun visor, sun blind, internal rear view mirror, heated external mirrors, adjustable suspension seat with belt and headrest, operator storage facilities, laminated windshield, heated rear window, loader control isolator, horn, fire extinguisher.

Electrical: Road lights front and rear, parking lights, front and rear working lights, reverse alarm and light, rear fog light, battery isolator, radio wiring and speakers, 70 amp alternator, rotating beacon.

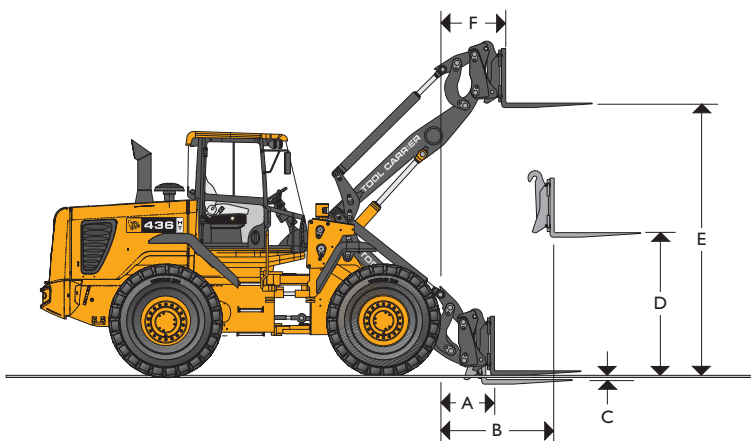
Bodywork: Front and rear fenders, side and rear access panels, flexible bottom step, full width rear counterweight, recovery hitch, lifting lugs, engine and transmission underguarding.

OPTIONAL EQUIPMENT

Auxiliary 4th spool hydraulic service, air conditioning, limited slip differentials front/rear axles, additional counterweight, oil bath air cleaner, turbo 2 pre-cleaner, visibowl pre-cleaner, tooth guard, replaceable bucket wearparts, sealed alternator, epoxy coated radiator/coolers, stainless steel brake pipes, Smooth ride system (SRS), hydraulic quickhitch, full rear fenders, high lift arms, super high lift arms, reversing camera (color), auto greasing system, auxiliary control buttons on joystick, spark arrestor, 24V to 12V in cab converter, cab screen guards, air suspension seat cab filtration options.



JCB WHEEL LOADER | 436 HT



LOADER DIMENSIONS – FORK FRAME WITH FORKS

assumes Michelin 20.5R25 XHA (L3) tires		Parallel fork	Roll back fork	
	Fork carriage width	ft-in (mm)	4-11 (1500)	4-11 (1500)
	Length of tines	ft-in (mm)	4-0 (1220)	4-0 (1220)
A	Reach at ground level	ft-in (mm)	2-7 (791)	2-7 (798)
B	Reach at arms horizontal	ft-in (mm)	5-4 (1613)	5-4 (1620)
C	Below ground level	ft-in (mm)	0-3/8 (8)	0-3/8 (16)
D	Arms, horizontal height	ft-in (mm)	6-5 (1946)	6-4 (1936)
E	Arms, maximum height	ft-in (mm)	12-7 (3828)	12-6 (3818)
F	Reach at maximum height	ft-in (mm)	2-10 (862)	2-10 (869)
	Payload**	lb (kg)	11025 (5000)	11025 (5000)
	Tipping load straight	lb (kg)	16910 (7669)	16910 (7669)
	Tipping load full turn (40°)	lb (kg)	14300 (6489)	14300 (6489)
	Attachment weight	lb (kg)	1063 (482)	1063 (482)

**At the center-of-gravity distance 1ft-8in (500mm). Based on 80% of full turn tipping load as defined by ISO 8313. Manual fork spacings at 2in (50mm) increments. Fork section 4in x 2in (100mm x 50mm).

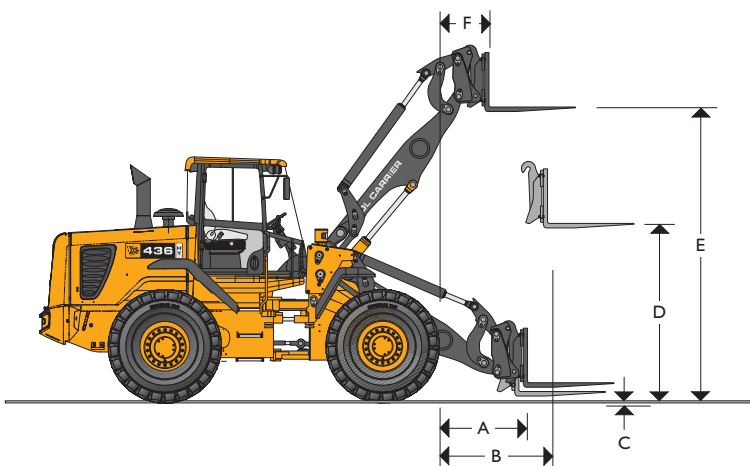


JCB WHEEL LOADER | 436 HT



JCB WHEEL LOADER | 436 HT

HIGH LIFT LOADER DIMENSIONS – FORK FRAME WITH FORKS

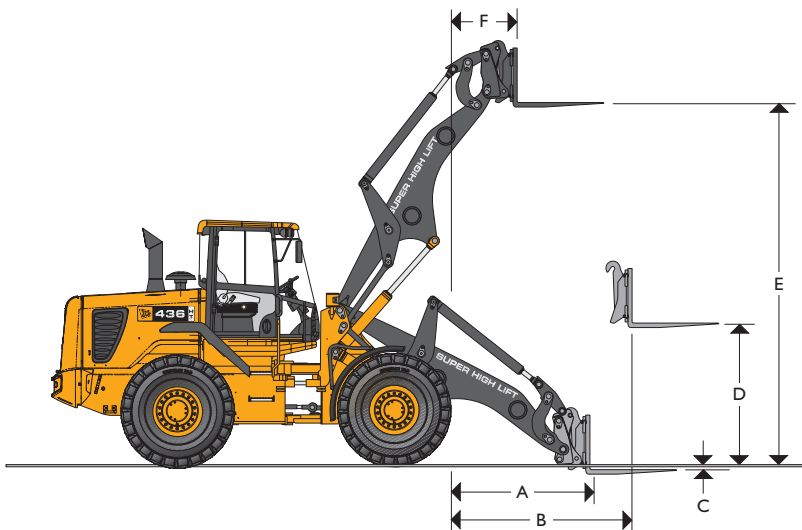


assumes Michelin 20.5R25 XHA (L3) tires		Parallel fork	Roll back fork	
	Fork carriage width	ft-in (mm)	4-11 (1500)	4-11 (1500)
	Length of tines	ft-in (mm)	4-0 (1220)	4-0 (1220)
A	Reach at ground level	ft-in (mm)	3-9 (1147)	3-9 (1154)
B	Reach at arms horizontal	ft-in (mm)	6-11 (2103)	6-11 (2110)
C	Below ground level	ft-in (mm)	0- $\frac{1}{2}$ (3)	0- $\frac{1}{3}$ (11)
D	Arms, horizontal height	ft-in (mm)	6-5 (1946)	6-4 (1936)
E	Arms, maximum height	ft-in (mm)	14-8 (4482)	14-8 (4472)
F	Reach at maximum height	ft-in (mm)	2-10 (862)	2-10 (869)
	Payload**	lb (kg)	10251 (4650)	10251 (4650)
	Tipping load straight	lb (kg)	15147 (6871)	15147 (6871)
	Tipping load full turn (40°)	lb (kg)	12815 (5813)	12815 (5813)
	Attachment weight	lb (kg)	1063 (482)	1063 (482)

**At the center-of-gravity distance 1ft-8in (500mm). Based on 80% of full turn tipping load as defined by ISO 8313. Manual fork spacings at 2in (50mm) increments. Fork section 4in x 2in (100mm x 50mm).



JCB WHEEL LOADER | 436 HT



SUPER HIGH LIFT LOADER DIMENSIONS – FORK FRAME WITH FORKS

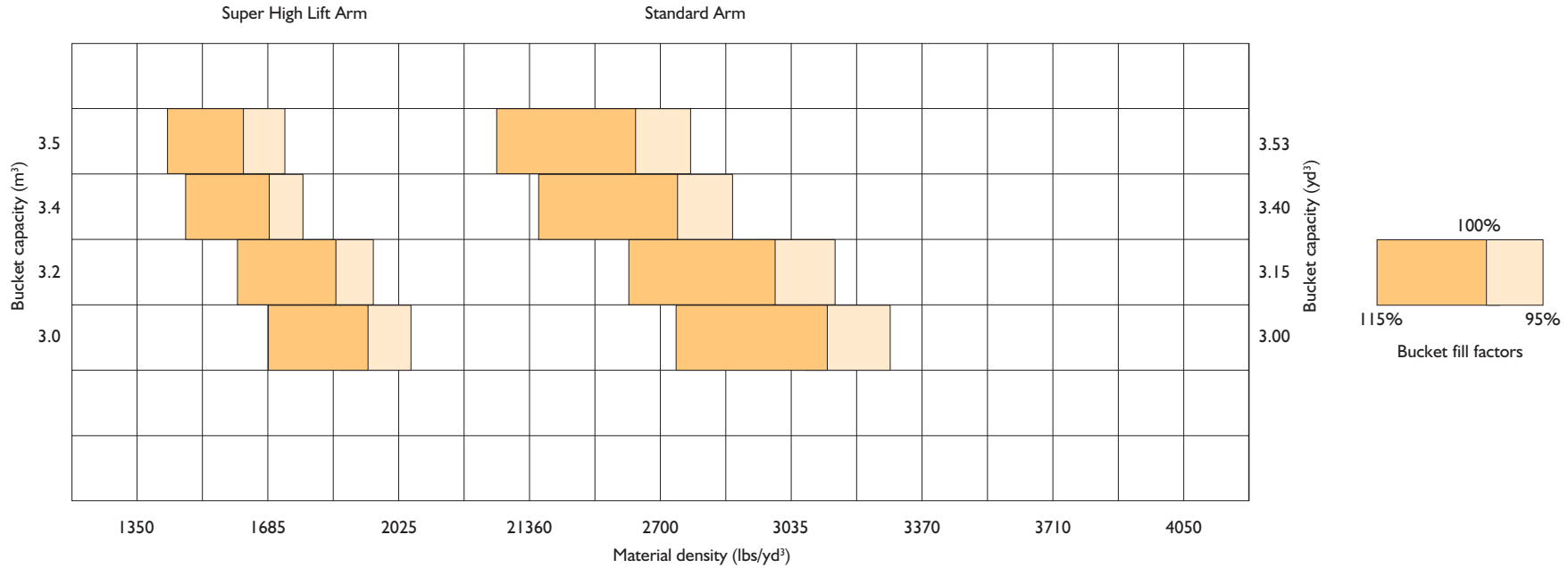
assumes Michelin 20.5R25 XHA (L3) tires		Parallel fork	Roll back fork
Fork carriage width	ft-in (mm)	4-11 (1500)	4-11 (1500)
Length of tines	ft-in (mm)	4-0 (1220)	4-0 (1220)
A Reach at ground level	ft-in (mm)	6-7 (2014)	6-8 (2021)
B Reach at arms horizontal	ft-in (mm)	8-5 (2578)	8-6 (2585)
C Below ground level	ft-in (mm)	-0-3/4 (-19)	-0-1/2 (-11)
D Arms, horizontal height	ft-in (mm)	6-5 (1946)	6-4 (1936)
E Arms, maximum height	ft-in (mm)	16-7 (5045)	16-6 (5035)
F Reach at maximum height	ft-in (mm)	2-11 (886)	2-11 (893)
Payload**	lb (kg)	7934 (3599)	7934 (3599)
Tipping load straight	lb (kg)	11967 (5428)	11967 (5428)
Tipping load full turn (40°)	lb (kg)	9919 (4499)	9919 (4499)
Attachment weight	lb (kg)	968 (440)	968 (440)

**At the center-of-gravity distance 1ft-8in (500mm). Based on 80% of full turn tipping load as defined by ISO 8313. Manual fork spacings at 2in (50mm) increments. Fork section 4in x 2in (100mm x 50mm).

JCB WHEEL LOADER | 436 HT



BUCKET SELECTOR



BUCKET SELECTOR

Material	Loose density		Fill factor
	lb/yd³	kg/m³	%
Snow (fresh)	337	200	110
Peat (dry)	674	400	100
Sugar beet	894	530	100
Coke (loose)	961	570	85
Barley	1012	600	85
Petroleum coke	1146	680	85
Wheat	1231	730	85
Coal bitumous	1290	765	100
Fertiliser (mixed)	1737	1030	85
Coal anthracite	1764	1046	100
Earth (dry) (loose)	1939	1150	100
Nitrate fertiliser	2180	1250	85

Material	Loose density		Fill factor
	lb/yd³	kg/m³	%
Sodium chloride (dry) (salt)	2192	1300	85
Cement Portland	2428	1440	100
Limestone (crushed)	2580	1530	100
Sand (dry)	2613	1550	100
Asphalt	2698	1600	100
Gravel (dry)	2782	1650	85
Clay (wet)	2832	1680	110
Sand (wet)	3187	1890	110
Fire clay	3507	2080	100
Copper (concentrate)	3878	2300	85
Slate	4721	2800	100
Magnetite	5402	3204	100



JCB WHEEL LOADER | 436 HT



THE BEST BACK-UP IN THE BUSINESS

Buy any JCB model and you'll get a complete deal that extends beyond that of any rival.

FINANCE

Your JCB Dealer can meet your financial needs through a variety of plans for leasing, lease purchases with or without options, installment sales contracts and rental programs.

PARTS

JCB Dealers' convenient locations offer excellent 'over the counter' parts availability.

WARRANTY

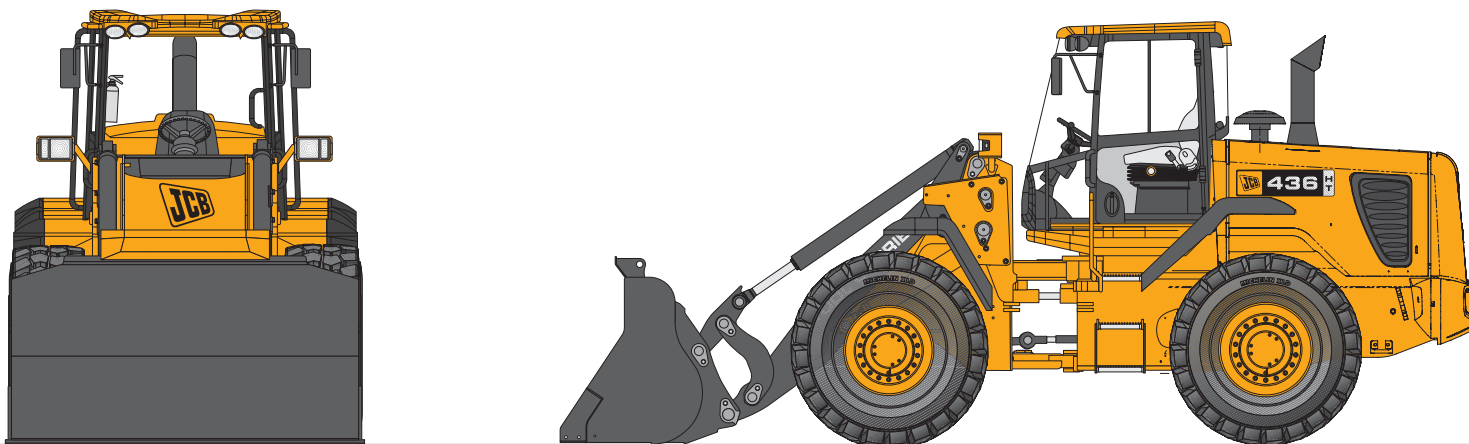
JCB machines are covered by JCB's one year standard warranty, which is outlined in the JCB 'Certificate of Warranty'. Extended warranty coverage is also available. Contact your JCB Dealer for details.

REGIONAL PARTS DEPOTS

For the breakdown part your dealer may not have in stock, JCB has SDD 'Same Day Dispatch,' from one of two parts distribution centers in the United States and one in Canada.

SERVICE

JCB Dealer service people are committed to keeping your JCB up and running. JCB Dealer mechanics are enrolled in on-going training programs and supported by experienced JCB Service Representatives based throughout North America.



JCB WHEEL LOADER | 436 HT



A GLOBAL COMMITMENT TO QUALITY

JCB's total commitment to its products and customers has helped it grow from a one-man business into the World's 5th largest manufacturer of backhoe loaders, crawler excavators, wheeled excavators, telescopic handlers, wheel loaders, dump trucks, rough terrain fork lifts, industrial fork lifts, mini/midi excavators, skid steer loaders and tractors.

By making constant and massive investments in the latest production technology, the JCB factories have become some of the most advanced in the World.

By leading the field in innovative research and design, extensive testing and stringent quality control, JCB machines have become renowned all over the world for performance, value and reliability.

And with a global sales and service network of over 400 distributors and agents, the company exports over 70% of its production to all five continents.

Through setting the standards by which others are judged, JCB has become one of Britain's most impressive success stories.



980

JCB Headquarters Savannah, 2000 Bamford Blvd., Pooler, GA 31322. Tel: 912.447.2000. Fax: 912.447.2299. www.jcb.com

JCB reserves the right to change design, materials and/or specifications without notice. Specifications are applicable to units sold in the United States and Canada. The JCB logo is a registered trademark of J C Bamford Excavators Ltd.

USA 21069-2/06-1SS I

Helping You Get
the Job Done!