

Expressions of interest for EX MidandBrick Kiln 11 Brick Making Plant

You can contact Gary on
Gary Silcock
garys@allused.com.au
+61 427 057 417.
Located Perth Australia



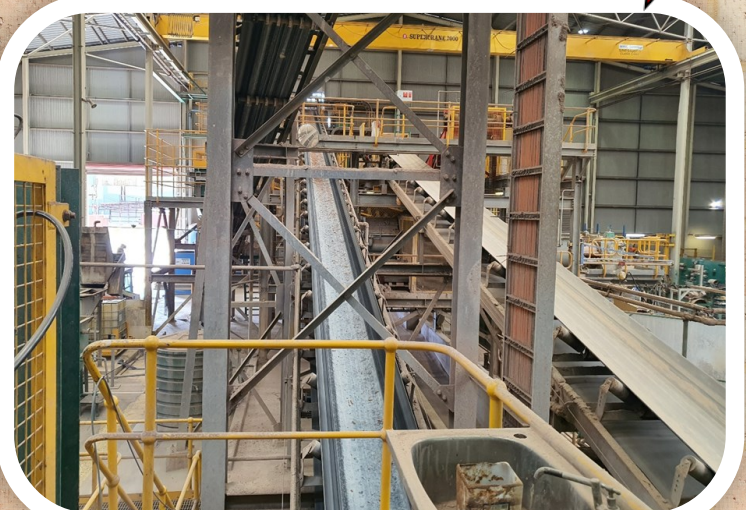
You can contact Gary on
Gary Silcock
garys@allused.com.au
+61 427 057 417.
Located Perth Australia



We have a Brick Making Plant Kiln 11 for sale. All realistic offers considered. Organize with Blake or Gary



WILL BE AVAILABE FROM APRIL 2022



Complete Keller automated brick plant, still running until April 2022

Approx. output of 50M SBE pa:

Steele pre mixer Pug, storage bins, Steele 90 Extruder with Pug mixer, Texturing and Coating line, Keller universal cutter, tray handling, approx. 15,000 Aluminum trays, dryer cars, brick dryer, unloading robot, kiln car setting robots, brick Keller kiln and control room, kiln cars, dehacking system, pack forming robots, strapping stations, pack stacking. Includes 2 Gen sets, 2 air compressors, 2 chamber lime baghouse scrubber (Hellmich). De Boer hand thrown mud plant with 3 heads, trays, moulds and sawdust handling and additional parts for other product lines. Plus large shed, and still running now in case you want to view this. (installed 2006, as kiln 11).

Operational Summary: The plant is in excellent condition and running well. It has many spares and associated product lines for 2 course modular brick (up to 300mm long, 162 mm high and 90 wide, with vertical coring), standard bricks (230 by 110 by 76 mm) and pavers extruded on flat (230 by 115 by 60 or 76 mm).

Go to www.aubricks.com.au for more images and videos